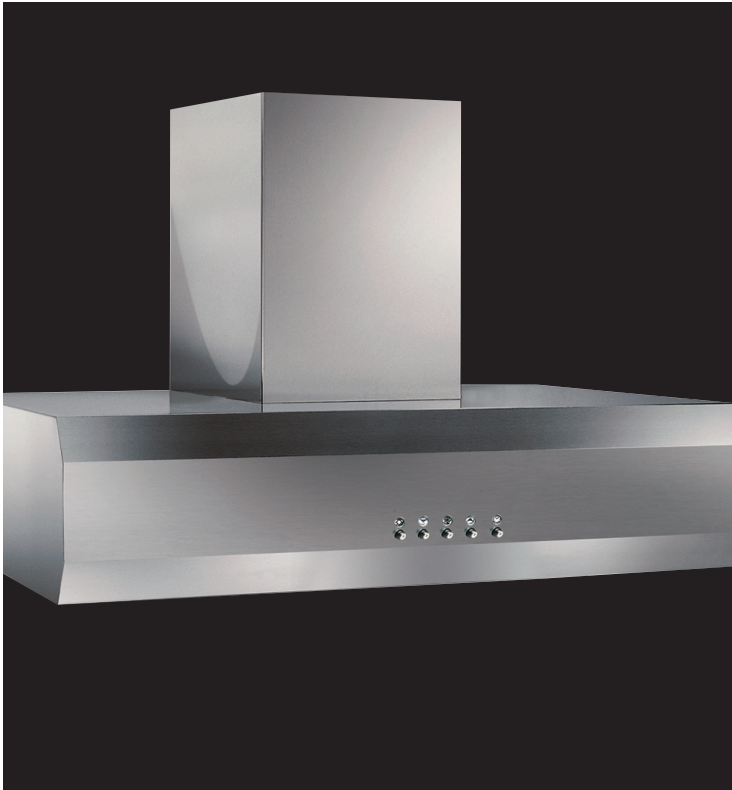


Professional Rangehoods



Good looking and efficient – the perfect combination! The new series of designer rangehoods from Kleenmaid combine stunning good looks with outstanding design, to provide the perfect finishing touch to any kitchen.

Style: Wall mounted canopy
Colour: Stainless steel
Width: 700 / 900 / 1000 / 1200mm
Operation: Push button controls and electronic auto sensor
Lighting: 2 x 20w Halogen lamps
Max airflow capacity: 1100 m3/h

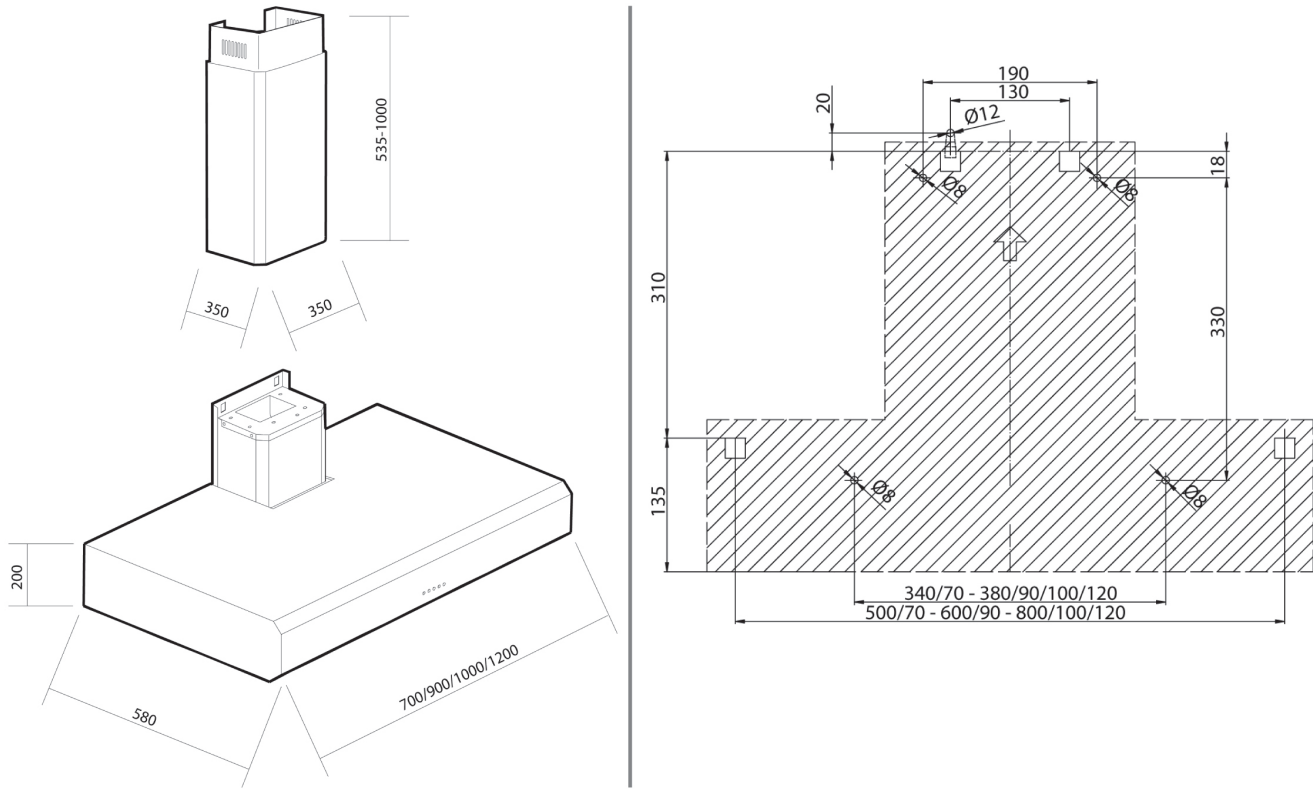
*Technical Specifications and product sizes can be varied by Manufacturer without notice. Any cut-outs for appliances should only be by physical measurements. Drawings are not to scale. All information supplied is for general reference purposes only and is on the understanding that Kleenmaid Pty Ltd will not be liable for any loss, liability or damage whatsoever arising as a result of reliance of such information.



For your nearest store call 13 13 08
www.kleenmaid.com.au

 **Kleenmaid**
The best you can own.

Professional Rangehoods



Important: Lower side of hood should be at least 750mm above cooktop when installing above SK70, SK90, SK100, SK120 splashback.

Model	Maximum Airflow Capacity (m ³ /h)	Elec. Approval No.	Electrical Rating			
			Voltage	W	Amp	Hz
K70	1100	Q03101	240	190	10	50
K90			240	320	10	50
K100			240	320	10	50
K120			240	320	10	50

Professional Series Rangehoods

As our professional rangehoods are fully enclosed in 441 grade stainless steel, they can be used in an outdoor environment. If placed outdoors, the rangehood must be regularly maintained as rust or premature deterioration is not covered under our 10 year warranty. Please ensure your rangehood is installed in accordance with your states laws & regulations.

(See page 3 for further details)

(General Manager - Customer Services Kleenmaid 12th July 2006)



For your nearest store call 13 13 08
www.kleenmaid.com.au



Professional Rangehoods

Installation regulations

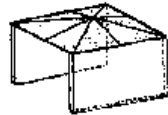
The following information is designed to clarify the regulations and installation requirements for outdoor cooking centres. The information is specifically relevant for the state of WA, however, they act as a good guideline for all States to follow. Please ensure that you read the information carefully so that you can inform customers of the correct usage for their outdoor cooking centres.

Please note that the outdoor cooking centres have been approved as an *OUTDOOR* appliance. Barbecues that are designed and approved for outdoor use **MUST NOT** be installed indoors. Installation and operation of outdoor barbecues must comply with AS 5601/AG 601 and the manufacturer's instructions.

What is an outdoor area or outdoor space?

While the definition of an outdoor space is not currently defined in AS 5601/AG 601, one of the following configurations is considered to meet the definition of outdoor space:

- An area with walls on all sides but with no overhead cover, or
- Within a partial enclosure that includes an overhead cover and no more than two sidewalls. These sidewalls may be parallel or at right angles to each other. Please refer to the attached diagrams.

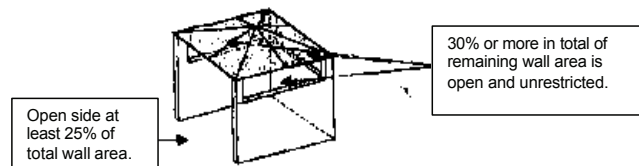


Parallel Walls



Right Angle Walls

- Or within a partial enclosure that includes an overhead cover and three sidewalls, and as long as the open side has a minimum area of 25% of the total wall area and the remaining wall area has 30% or more unrestricted opening. Please refer to the attached diagram.



Installation Requirements

A minimum clearance of 1500mm between the cooking surface and the underside of the ceiling must be maintained.

Clearance from an open grid BBQ (residential) to overhead grease filter (Rangehood) must be 1200mm.

In WA an installer will not connect an outdoor cooking centre to a fixed connection (natural gas) for indoor usage, however, if the customer wants a portable connection to a gas bottle then there is nothing really stopping them from doing so because the user can use the appliance outdoors.

Please ensure that you are fully aware of the proper usage and installation requirements for your outdoor cooking centre. Your outdoor cooking centre must be installed outdoors or in a very well ventilated space. Kleenmaid is not responsible for any cases of carbon monoxide poisoning or any other gas accidents resulting from incorrect use or installation of our outdoor cooking range.



10 Year Parts & Labour Warranty*

For your nearest store call 13 13 08
www.kleenmaid.com.au

Kleenmaid
The best you can own.