

SPECIFICATIONS

Built in Pyrolytic Oven



The Kleenmaid pyrolytic oven delivers the convenience of total self-cleaning, eliminating the need for harsh cleaning products. Kleenmaid ovens showcase a range of features that ensure perfect cooking results every time. Attention to small details and major time saving innovations help us to maintain our commitment to bringing you the best products you can own.

Features:

Oven capacity:	56 litres
Cooking programs:	11 multi-function cooking programs - including rotisserie
Special functions:	Pyrolytic self cleaning function & catalyser unit
Easycook:	5 automatic cooking functions
Construction:	304 grade stainless steel
Door:	4 layers of glass
Timer:	Backlit LCD fully programmable electronic timer
Inclusions	1 x Easy Cook Guide - Instruction Manual - 8 pages. 2 x Telescopic Racks 2 x Anti Tilt Grill racks 1 x 20mm Multipurpose baking tray 1 x 45mm Deep Baking Tray 2 x Baking Plates (pastry trays) 1 x Rotisserie including handle

10

10 Year Warranty*

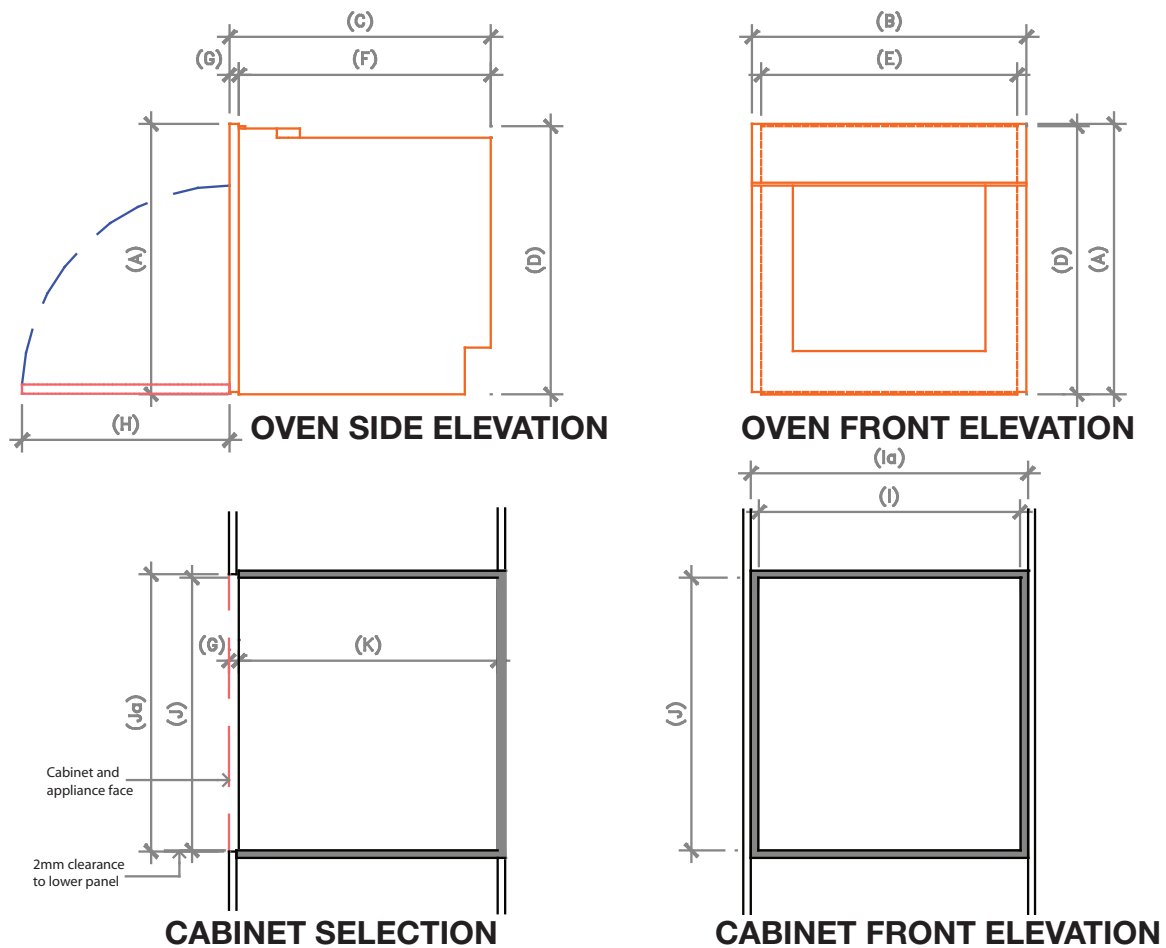
For your nearest store call 13 13 08
www.kleenmaid.com.au

Kleenmaid
 P R O F E S S I O N A L

SPECIFICATIONS

Built in Pyrolytic Oven

PRODUCT AND CABINET DIMENSIONS: 'FLUSH FIT' 'SINGLE OVEN' INSTALLATION



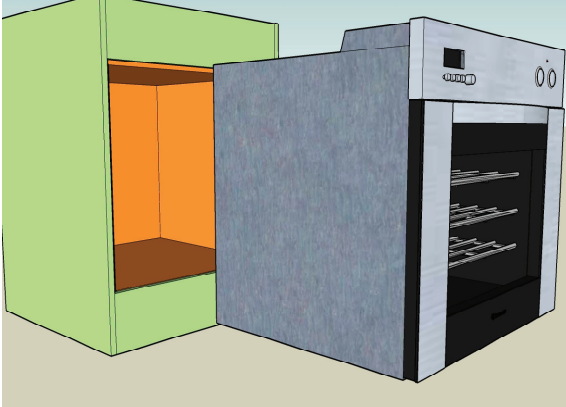
	REF	Appliance and cabinetry dimensions (mm)	TO701X
Appliance	A	Overall height of appliance	592
	B	Overall width of appliance (fascia)	593
	C	Overall depth of appliance (excluding handles/knobs)	567
	D*	Height of chassis	574
	E	Width of chassis	560
	F	Depth of chassis	545
	G	Depth of oven frame and control panel (flush fitting cabinetry clearance)	22
	H	Depth of oven door when fully open (measured from front of control panel)	425
Cabinetry	I	Minimum inside width of cavity	565
	Ia	Overall width of cabinet module	600
	J*	Inside height of cavity*	585
	Ja	Minimum height for flush fit = A + clearances (2mm at bottom / balance at top)	597
	K	Minimum inside depth of cavity	550
	*	Height measurements are from cavity support base	

Model	Capacity (litres)	Electrical Ap- proval	Installation Method	Electrical Rating			
				Voltage	Hz	W	Amp
TO701X	52	Q031574	#Flush	240	50	3375	15

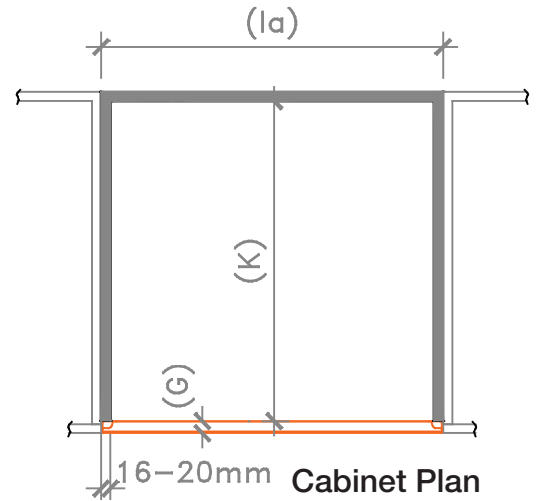
#Proud not recommended

SPECIFICATIONS

Built in Pyrolytic Oven

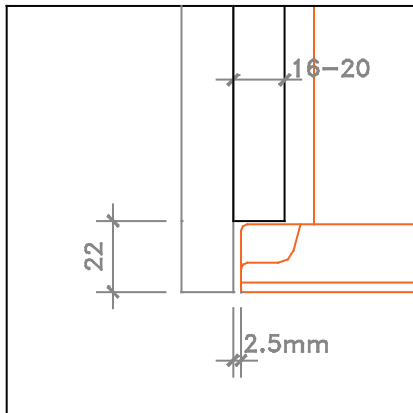


Cabinet & Oven Pictorial

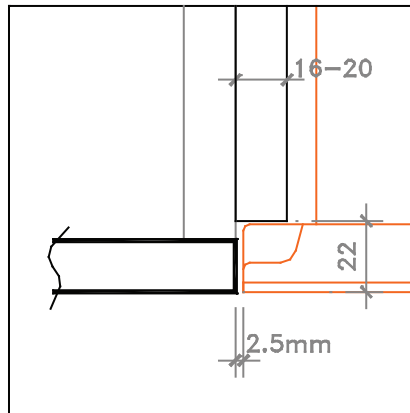


Cabinet Plan

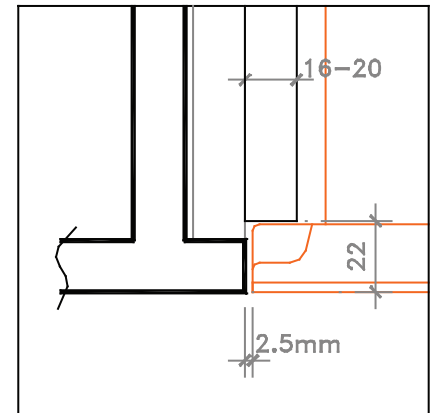
Flush Fitting Installation Options



Adjacent Gable



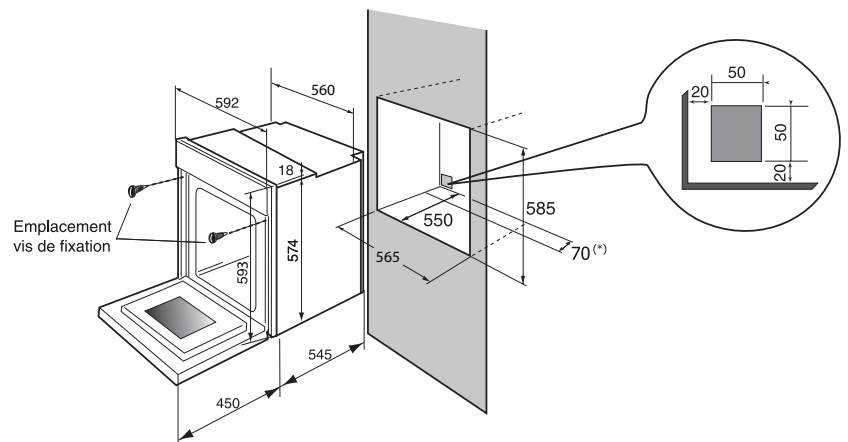
Adjacent Cupboard



Adjacent Drawer

Installation Notes

1. Check measure appliance and ensure cabinet is constructed square and to dimensions required.
2. The oven can be installed Underbench or in a Wall Mounted installation. Potential oven surface temperatures should be considered.
3. Make sure that surrounding materials are heat resistant.
4. Align the oven centrally with respect to the side walls of the unit surrounding it and fix it in place carefully with the screws provided. Use rubber stoppers to mask fixing holes & cushion door.
5. If the support shelf is open at the back, the gap must not be more than 70mm (for stability).



Built in Pyrolytic Oven

Installation Hints & Electrical Information

Instructions

Wall ovens should be mounted so that when the door is open fully, the top of the door is approximately waist level to allow the user easy access to the oven.

So that your oven maintains its efficient sealing capacity for the life of the appliance, NEVER USE THE DOOR AS A LEVER (especially when the oven is being installed into its recess). Similarly undue pressure must never be placed on the oven door when it is open.

Electrical Connection

Connection to electrical mains must only be performed by a licenced electrical contractor. All care must be taken to ensure the installation is properly earthed and conforms to local codes. Ensure enough flex is provided when connecting electrical connections to allow for ease of installation and servicing of the appliance.

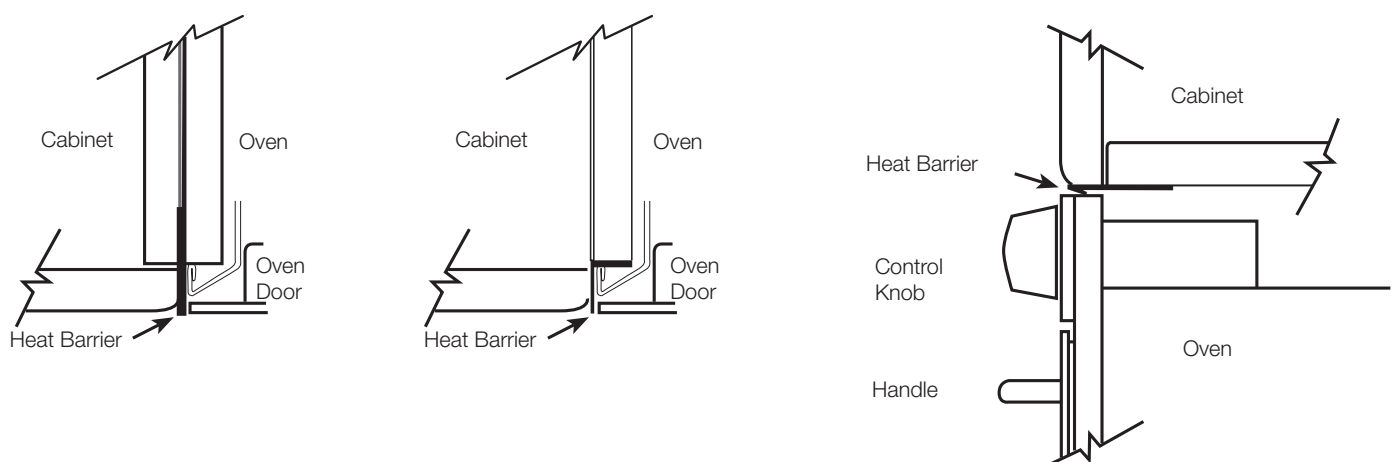
Installation of wall ovens in vacuum formed vinyl/plastic materials

When wall ovens are installed in situations in conjunction with vacuum formed vinyl/plastic materials, formed onto a base material, it is essential to avoid direct radiation onto these surfaces and edges of doors and panels adjacent to the sides and top of the wall oven.

It is recommended that a heat barrier be fitted to avoid this radiated heat. (NOT SUPPLIED - Customer responsibility).

Following are two methods of protecting the doors or panels to the side of the oven, and one to protect the cabinets above the oven.

No responsibility can be accepted for any claims regarding the surrounding doors and panels if the installation is not to an approved manner.



* Technical Specifications and product sizes can be varied by Manufacturer without notice. Any cut-outs for appliances should only be by physical measurements. Drawings are not to scale. All information supplied is for general reference purposes only and is on the understanding that Kleenmaid Pty Ltd will not be liable for any loss, liability or damage whatsoever arising as a result of reliance of such information.