

# Built in Ovens



TO101X



TO201X



TO401X



TO601X

With features designed to bring out the gourmet cook in you, you'll love the good looks and easy use and maintenance of our built in ovens. Enjoy classic European style, exceptional quality and multi-function appliances, which will assist you to produce the best results every time you cook.

Ideal for either under bench or wall mounted installation, every Kleenmaid oven is guaranteed to enhance both your kitchen and your lifestyle.

**TO101X**

Oven capacity: 56 litre capacity  
Cooking programs: 7 multi-function cooking programs  
Timer: Manual countdown timer

**TO201X/W**

Oven capacity: 56 litre capacity  
Cooking programs: 10 multi-function cooking programs  
Timer: Electronic programmable timer

**TO401X**

Oven capacity: 56 litre capacity  
Cooking programs: 10 multi-function cooking programs  
Timer: Fully programmable electronic timer

**TO601X**

Oven capacity: 56 litre capacity  
Cooking programs: 11 multi-function cooking programs  
Timer: Fully programmable electronic timer  
Operation: Full electronic touch control panel

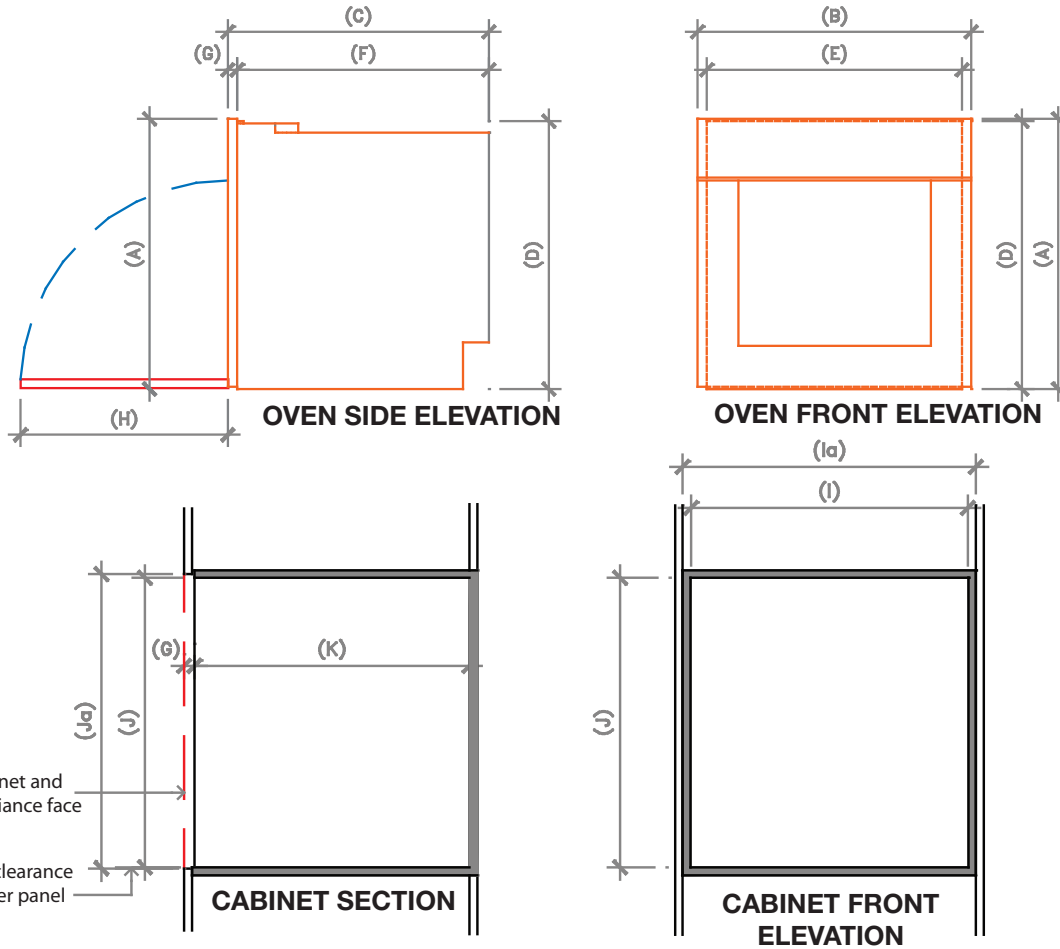
10

10 Year Warranty\*

For your nearest store call 13 13 08  
[www.kleenmaid.com.au](http://www.kleenmaid.com.au)



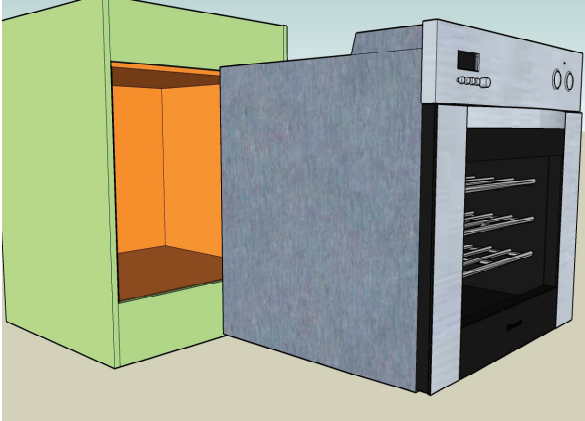
# Built in Ovens



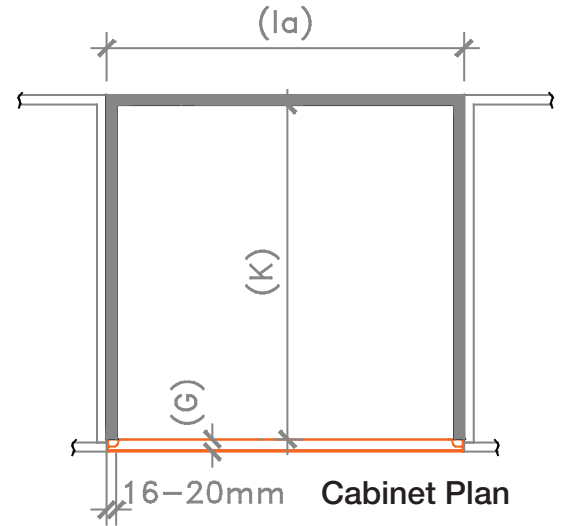
	REF	Appliance and cabinetry dimensions (mm)	TO101, TO201, TO401, TO601
Appliance	A	Overall height of appliance	595
	B	Overall width of appliance (fascia)	597
	C	Overall depth of appliance (excluding handles/knobs)	568
	D*	Height of chassis	588
	E	Width of chassis	555
	F	Depth of chassis	548
	G	Depth of oven frame and control panel (flush fitting cabinetry clearance)	22
	H	Depth of oven door when fully open (measured from front of control panel)	445
Cabinetry	I	Minimum inside width of cavity	560
	Ia	Overall width of cabinet module	600
	J*	Inside height of cavity	590
	Ja	Minimum height for flush fit = A + Clearances (2mm at bottom with balance at top)	600
	K	Minimum inside depth of cavity	560
* Height measurements are from cavity support base			

Model	Capacity (litres)	Electrical Approval	Installation Method	Electrical Rating			
				Voltage	Hz	W	Amp
TO101X	56	Q03355	#Flush	240	50	2100	10
TO201X/W	56	Q03355	#Flush	240	50	3400	14
TO401X	56	Q03355	#Flush	240	50	3400	14
TO601X	56	Q03355	#Flush	240	50	3400	14

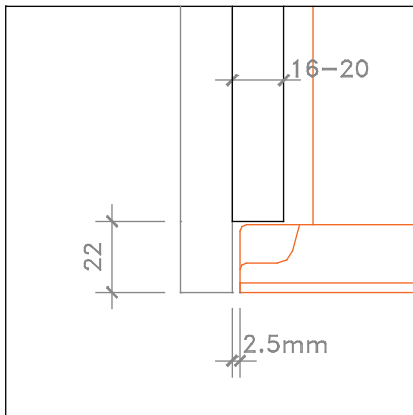
# Built in Ovens



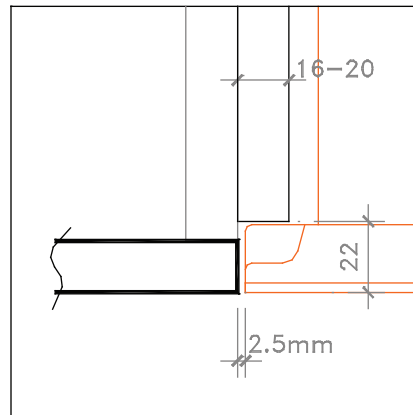
Cabinet & Oven Pictorial



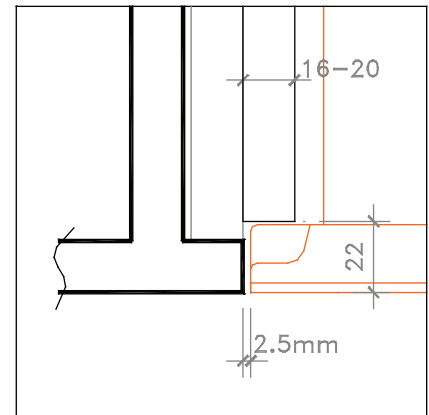
## Flush Fitting Installation Options



Adjacent Gable



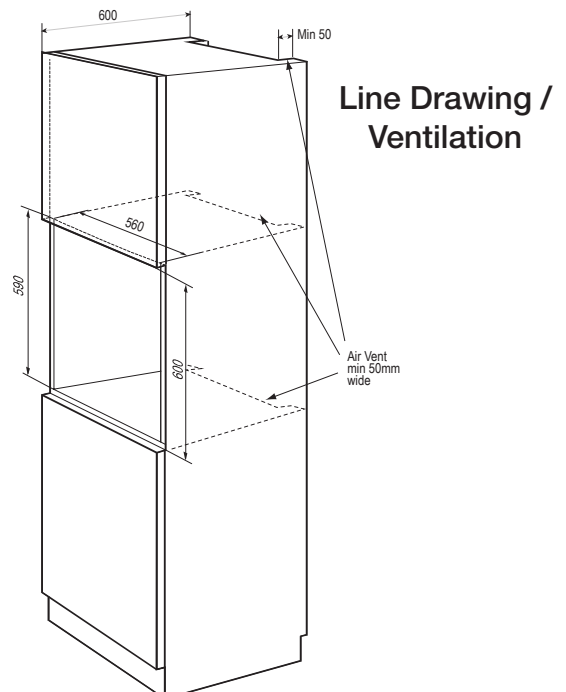
Adjacent Cupboard



Adjacent Drawer

## Installation Notes

1. Check measure appliance and ensure cabinet is constructed square and to dimensions required.
2. The oven can be installed Underbench or in a Wall Mounted installation. Potential oven surface temperatures should be considered.
3. Make sure that surrounding materials are heat resistant
4. Rear panel of cabinet should be removed or adequate ventilation provided as shown. Bottom of kitchen cabinet must always be shorter than the side panels.
5. Align the oven centrally with respect to the side walls of the unit surrounding it and fix it in place carefully with the screws provided.



# Installation Hints & Electrical Information

## Installation Hints & Electrical Information

### Instructions

Wall ovens should be mounted so that when the door is open fully, the top of the door is approximately waist level to allow the user easy access to the oven.

So that your oven maintains its efficient sealing capacity for the life of the appliance, NEVER USE THE DOOR AS A LEVER (especially when the oven is being installed into its recess). Similarly undue pressure must never be placed on the oven door when it is open.

### Electrical Connection

Connection to electrical mains must only be performed by a licenced electrical contractor. All care must be taken to ensure the installation is properly earthed and conforms to local codes. Ensure enough flex is provided when connecting electrical connections to allow for ease of installation and servicing of the appliance.

---

### Installation of wall ovens in vacuum formed vinyl/plastic materials

When wall ovens are installed in situations in conjunction with vacuum formed vinyl/plastic materials, formed onto a base material, it is essential to avoid direct radiation onto these surfaces and edges of doors and panels adjacent to the sides and top of the wall oven.

It is recommended that a heat barrier be fitted to avoid this radiated heat. (NOT SUPPLIED - Customer responsibility).

Following are two methods of protecting the doors or panels to the side of the oven, and one to protect the cabinets above the oven.

No responsibility can be accepted for any claims regarding the surrounding doors and panels if the installation is not to an approved manner.

